

HOW TO MAKE A MOB CAP

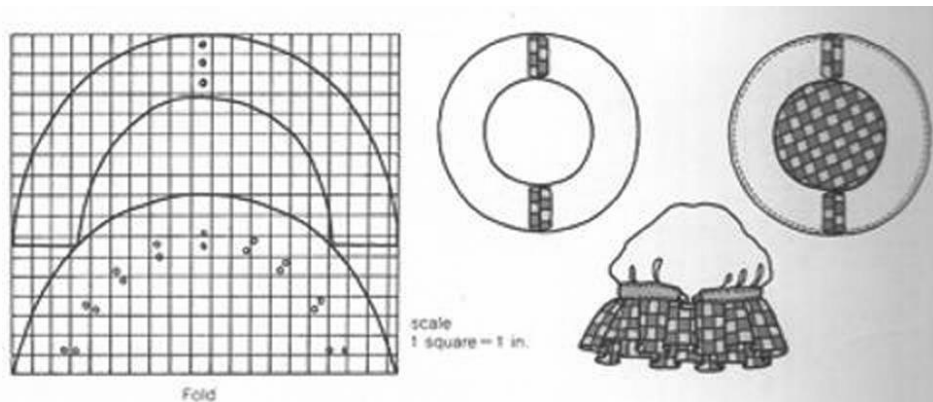
You will need

- $\frac{3}{4}$ yard of 36 inch wide fabric.
- 1 $\frac{1}{2}$ yards of 1 inch wide tape
- $\frac{1}{2}$ inch wide elastic

1) Pin the pattern pieces into the fabric, the crown lying along the fold as shown in the diagram. Cut out (three pieces).

2) Seam the two brim pieces to make a ring. Place the brim section on the crown section, right sides facing, and then stitch them together as shown. Turn the cap right sides out and then fold the brim back on itself, wrong sides together, thus making a doubled fabric brim, the raw edge lying along the seam. Press.

3) Stitch the casing tape on the inside of the cap, to cover the stitch as shown, leaving an opening for inserting the elastic. Cut a piece of elastic to fit the head when stretched. Insert. Join ends. Trim as required. Etc

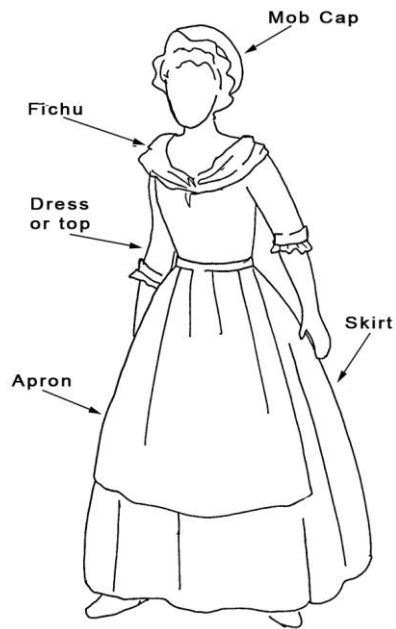


Blandford Georgian Fayre

Costume Advice



Woman



MOB CAP – See back page for ideas and pattern.

DRESS – Dress with $\frac{3}{4}$ length sleeves (or cut them off) and a low round or square neck. Think about adapting an old dress. If you can't find a dress look for a top and skirt of a similar style.

FICHU – A triangle of plain white fabric tied over the shoulders and knotted at the front.

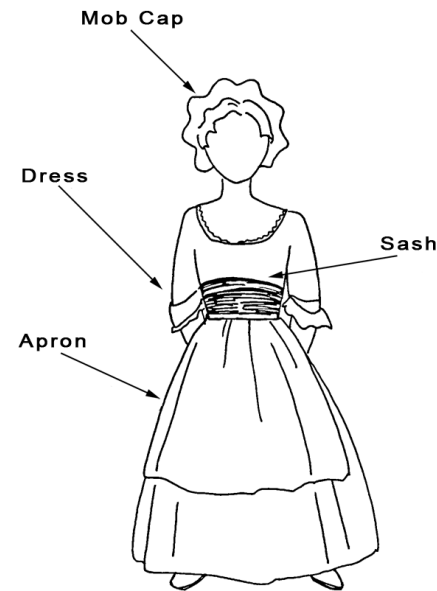
SKIRT – This would have been part of the dress but it might be easier to find a skirt and top separately.

APRON – Long apron, preferably white, tied around the waist and over the jacket.

SHOES – Plain, dark shoes or boots.

SHAWL – Any plain woollen shawl will do.

Young Girl



MOB CAP – See back page for ideas and pattern.

DRESS – Dress with $\frac{3}{4}$ length sleeves (or cut them off) and a low round or square neck. Tie a sash or apron around the waist with a bow at the back. A pale shirt could be worn under the dress with just the cuffs showing. If finding a dress proves difficult separate skirt and top can be used in a similar fashion to the suggested women's costume.

SHOES – Plain, dark shoes or boots.

SHAWL – Any plain woollen shawl will do.

General Advice

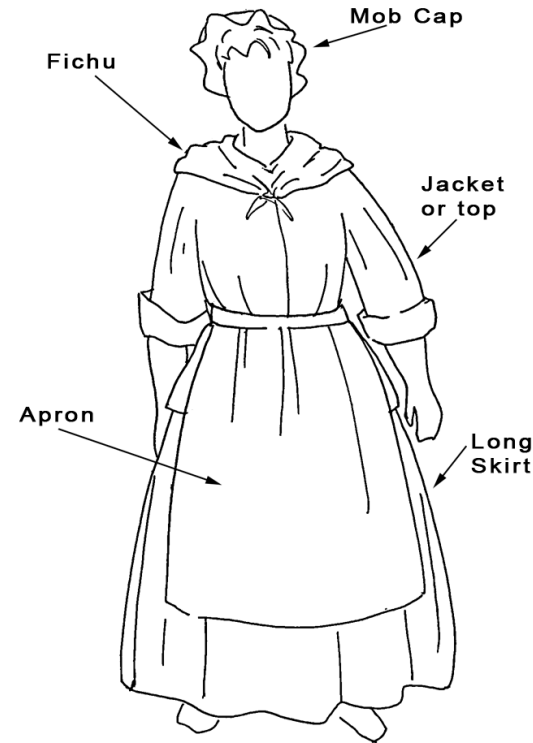
Try to manage to wear other clothes that will not show underneath your costume, it may be quite cold.

Make a cape from an old velvet or brocade curtain that you can draw together around your neck.

Look in charity shops for articles of clothing that can be bought cheaply and adapted simply.

Use your imagination; adapting clothes that you already have in simple ways will be suitable. Don't go out and spend huge amounts of money.

Working Woman



MOB CAP – See back page for ideas and pattern.

JACKET – Try a wrap around jacket that will sit comfortably over full skirts; a shirt with the collar tucked in and sleeves rolled up, wear a pale shirt underneath so that the cuffs show under the jacket.

FICHU – A triangle of plain white fabric tied over the shoulders and knotted at the front.

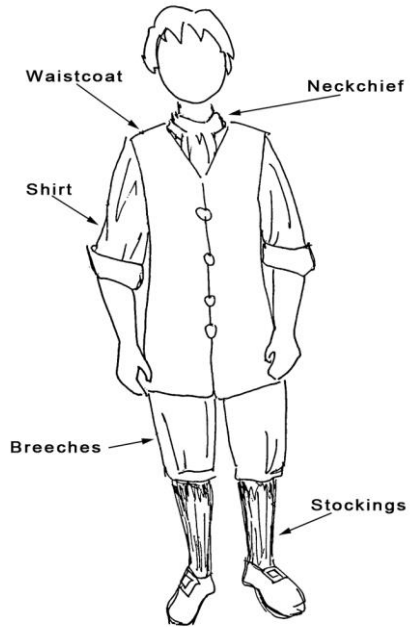
SKIRT – Long ankle length skirt in any colour or pattern. A petticoat under the skirt will give more volume.

APRON – Long apron, preferably white, tied around the waist and over the jacket.

SHOES – Plain, dark shoes or boots.

SHAWL – Any plain woollen shawl will do.

A Working Man or Boy



HAT – Black tricorn if possible.

SHIRT – Collarless shirt, try cutting the collar off an old shirt, turn back the sleeves to hide the modern cuffs.

NECKERCHIEF – A triangle of plain white or coloured fabric tied around the neck and folded or tied at the front.

BREECHES – An old pair of trousers cut off or rolled just below the knee, then pinned to gather the fabric round the leg.

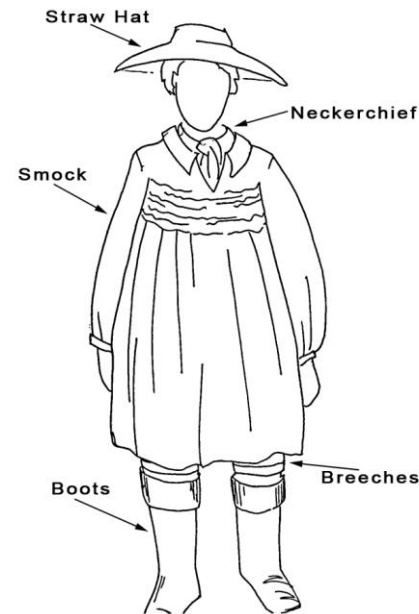
WAISTCOAT – These were worn long, down to the top of the thigh. If you don't have a waistcoat, cut the sleeves off an old jacket.

STOCKINGS – Thick woollen socks in dark or muted colours.

SHOES – Plain dark shoes, preferably with a buckle, try the jewellery counter in charity shops.

CLOAK – Again a curtain would be suitable though this should be in a dark colour and heavy fabric for men.

Male Farm Worker or labourer



HAT – A wide brimmed straw hat.

NECKERCHIEF - A triangle of plain white or coloured fabric tied around the neck and folded or tied at the front.

SMOCK – This would have been made of heavy linen with smocking across the chest and an open neck. A very large over-shirt in a pale fabric would be suitable.

BREECHES - An old pair of trousers cut off or rolled just below the knee, then pinned to gather the fabric round the leg.

STOCKINGS – Thick woollen socks in dark or muted colours.

BOOTS – These would have been dark coloured leather boots reaching to just below the knee, black wellies would be suitable, also try a band of black felt around the top of the boots to make them look more authentic.